



Light Measurement Report

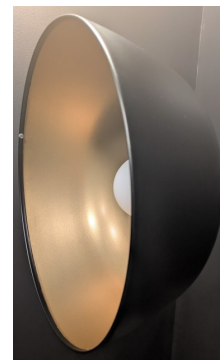
Print date: 10/22/2025

Measurement date and time: 9/29/2025 2:17:43 PM – Measurement no. VFR-250929-0170-MS

Operator: Shawn Blaszk

Tested Light Source

Product Name Dram: DR-M-PC106_PC47-MTP-27-0.1_10V_UNV
Manufacturer RBW
Product Description Dram-Medium-Satin Black_Salem Gold-Matte PET-2700K-0.1% Dimming, 0-10V Control, 120V-277V "Universal Input" (Driver External), Input Current: 350mA, Driver Model: EldoLED Solodrive 561/S



Light Quality

CRI: 91.1

Color Temperature

2471 K

Color Match

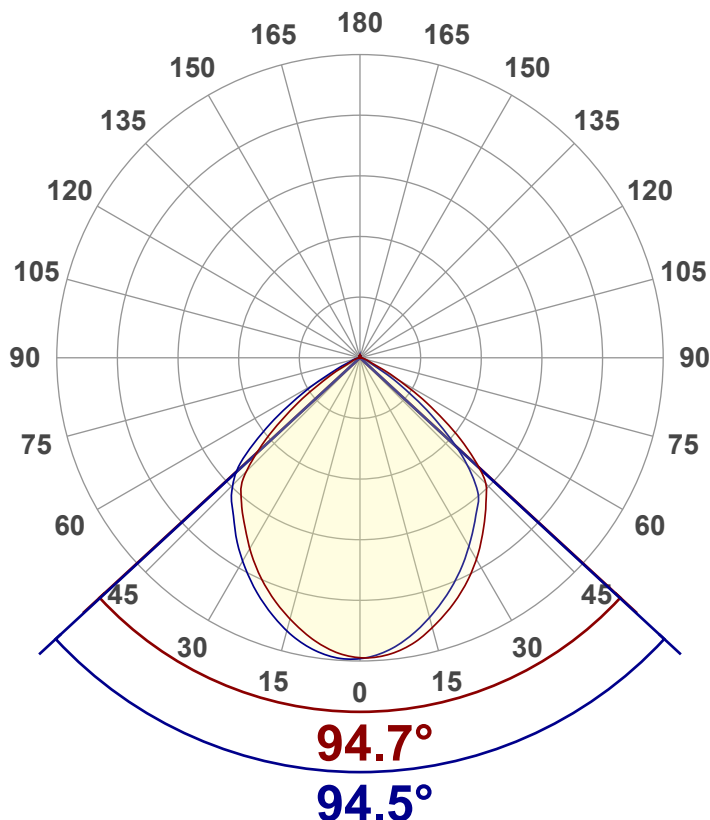
CIE1931
x: {CIEx#}
y: {CIEy#}

Summary of Results

Total Lumen Output 679 lm
Luminaire Efficacy 46 lm/W
Peak Intensity and Beam Angle 356 cd - 94.7°
Color Rendering TM13-18 R_r 90.9 – R_g 98.6
Color Shift, CIE duv Duv 0.0002
MacAdams Steps 3
Flicker SVM 0.05 – PstLM 0.2
Input Power, Power and Displ. Factors 14.8 W – PF 0.95 – DPF 0.97
Input RMS Voltage and Current 120 V – 0.130 A
Frequency of Input Power 60 Hz

Luminous Intensity diagram

Unit: 0-100% of peak intensity



Main Values

Output (total Lumen) 679 lm
Lumen Up% / Down% 1.15% / 98.85%
Peak Intensity 356 cd
Beam Angle (50%-FWHM) 94.74°

Cut-off Angle

Average 2,5% 140°

Field Angle

Average 10% 122.4°

Intensity Ratio

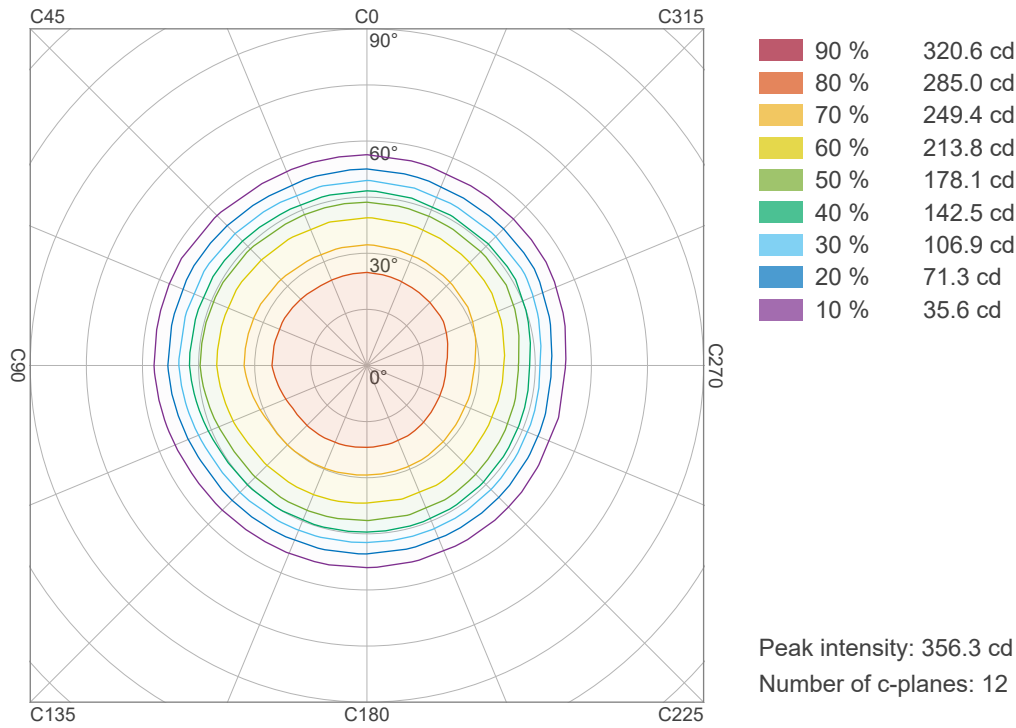
In 120° cone 94.9%
In 90° cone 72.2%

C000-C180

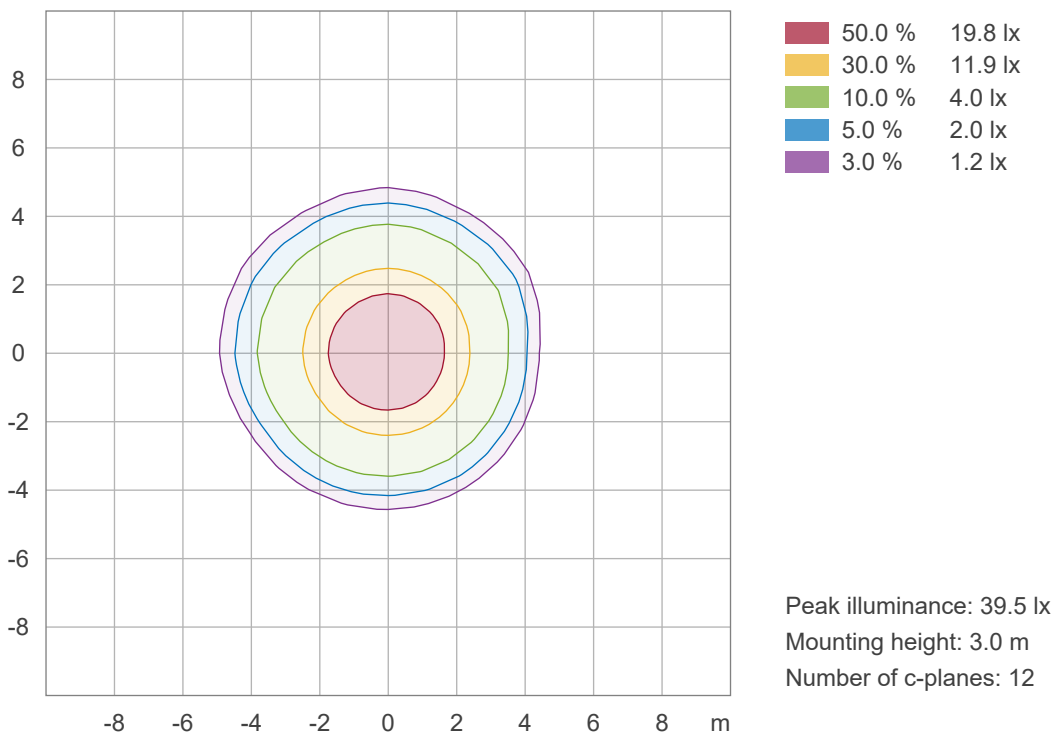
C090-C270



Iso-intensity Diagram (Iso-candela)



Iso-illuminance Diagram (Iso-lux)





Light Measurement Report

Print date: 10/22/2025

Measurement date and time: 9/29/2025 2:17:43 PM – Measurement no. VFR-250929-0170-MS

Operator: Shawn Blaszk

Color details

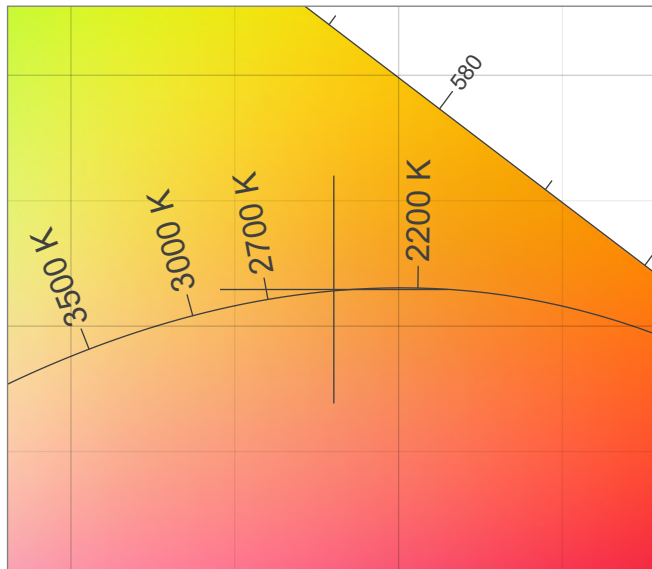
Correlated Color Temperature, Target CCT = 2471 K
Correlated Color Temperature, Measured CCT = 2471 K
Color Rendering Index CRI 91.1
Color Rendering Index, R9 (red component) R9 = 49.0
Color Rendering TM30-18 R_f 90.9 – R_g 98.6
Color Quality Scale CQS = 88.0

MacAdam Steps 3
Color coordinates CIE 1931 (x;y) = (0.480;0.415)
Color coordinate CIEs 1960 (u;v) = (0.274;0.355)
Color deviation from BBL Duv = 0.0002
Color coordinate CIEs 1976 (CIELUV)(u';v') = (0.274;0.532)

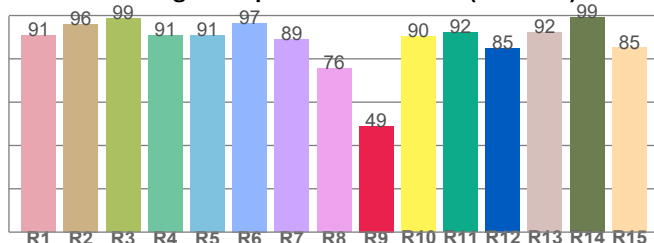
CIE 1931



CIE 1931 – zoomed on Planckian locus



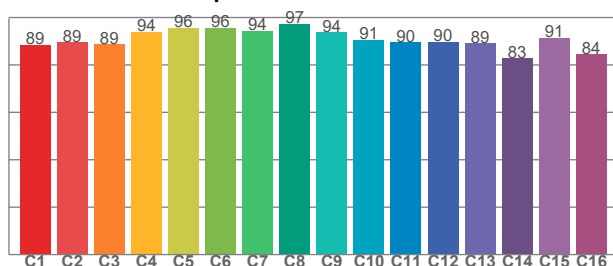
Color Rendering Index per reference color (CIE 1995)



CRI R values, only R1-R8 are used to calculate final CRI value

R1	R2	R3	R4	R5	R6	R7	R8	R9	R10	R11	R12	R13	R14	R15
90.9	96.1	98.8	90.8	90.9	96.5	89.0	75.7	49.0	90.5	92.3	85.0	92.3	99.3	85.1

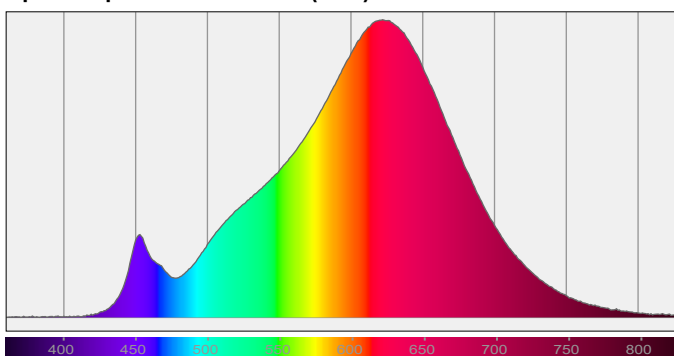
TM30-18 Rf-values per hue bin



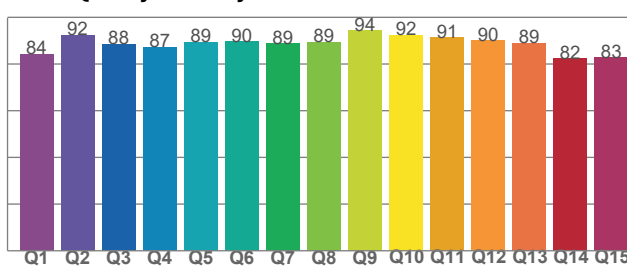
TM30 C values, 16 binned values out of total of 99 C values

C1	C2	C3	C4	C5	C6	C7	C8	C9	C10	C11	C12	C13	C14	C15	C16
88.6	89.5	88.6	94.0	95.5	95.5	94.3	97.2	93.8	90.6	89.6	89.7	89.1	82.8	91.4	84.4

Spectral power distribution (SPD) / W/nm – 0-100%



Color Quality Scale by reference color



CQS Q values

Q1	Q2	Q3	Q4	Q5	Q6	Q7	Q8	Q9	Q10	Q11	Q12	Q13	Q14	Q15
84.1	92.4	88.5	87.3	89.2	89.6	88.7	89.4	94.3	92.4	91.3	90.0	89.0	82.3	82.8



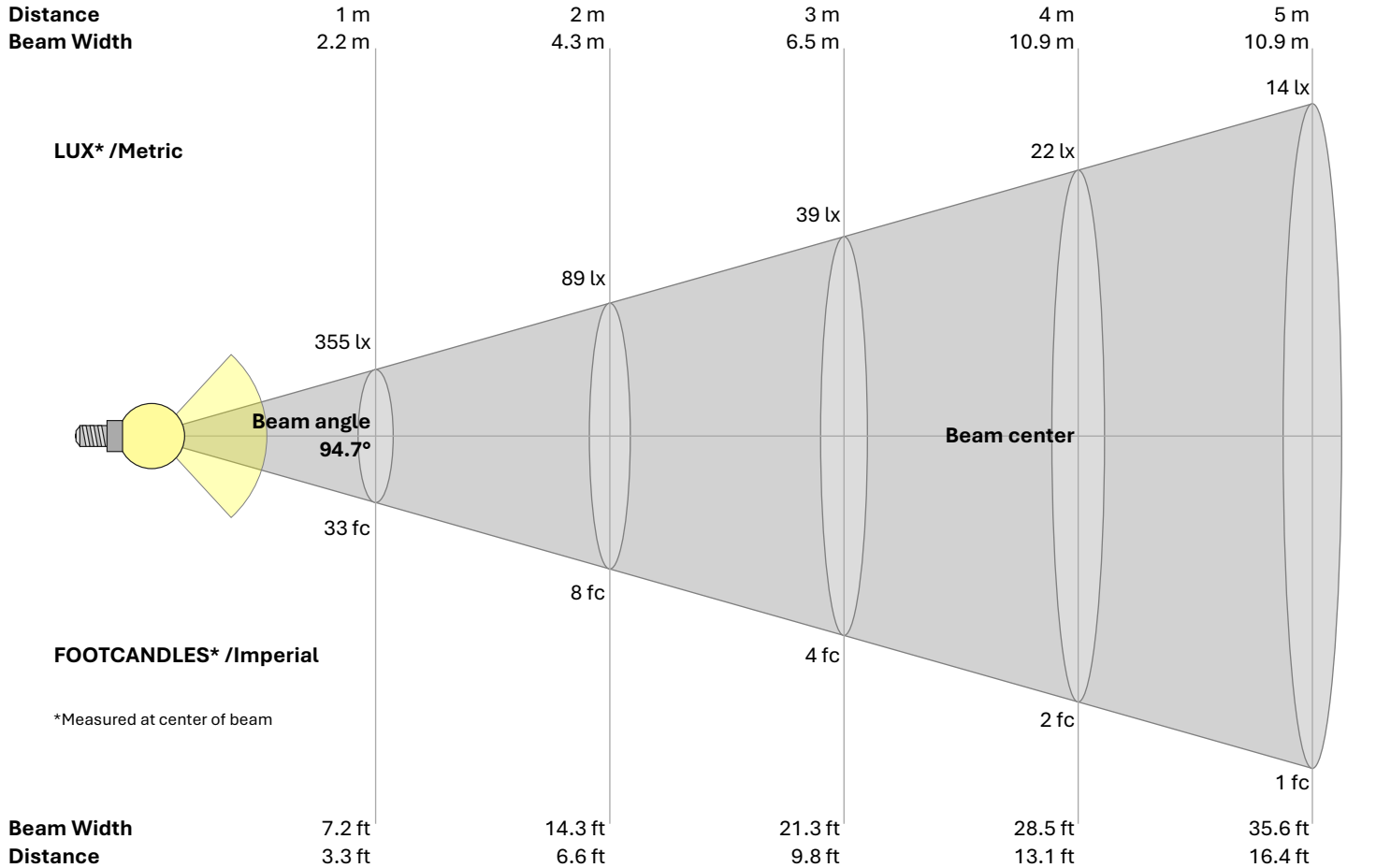
Light Measurement Report

Print date: 10/22/2025

Measurement date and time: 9/29/2025 2:17:43 PM – Measurement no. VFR-250929-0170-MS

Operator: Shawn Blaszak

Beam Details



1	2	3	4	5	6	7	8	9	10	11	12	13	14	15	16	17	18	19	20	m
3.3	6.6	9.8	13.1	16.4	19.7	23	26.2	29.5	32.8	36.1	39.4	42.7	45.9	49.2	52.5	55.8	59.1	62.3	65.6	ft
355	89	39	22	14	10	7	6	4	4	3	2	2	2	2	1	1	1	1	1	lux
32.9	8.2	3.7	2.1	1.3	0.9	0.7	0.5	0.4	0.3	0.3	0.2	0.2	0.2	0.1	0.1	0.1	0.1	0.1	0.1	fc

Intensities in 0° c-plane

0°	5°	10°	15°	20°	25°	30°	35°	40°	45°	50°	55°	60°	65°	70°	75°	80°	85°	90°	95°	γ
355	353	344	330	314	296	275	253	231	209	163	106	55	21	10	6	3	1	0	0	cd
100%	99%	97%	93%	89%	83%	78%	71%	65%	59%	46%	30%	16%	6%	3%	2%	1%	0%	0%	0%	of 0°val

Intensities in 90° c-plane

0°	5°	10°	15°	20°	25°	30°	35°	40°	45°	50°	55°	60°	65°	70°	75°	80°	85°	90°	95°	γ
355	348	335	318	299	279	258	237	216	178	123	68	28	12	7	4	2	1	1	1	cd
100%	98%	94%	90%	84%	79%	73%	67%	61%	50%	35%	19%	8%	3%	2%	1%	1%	0%	0%	0%	of 0°val

Intensities in 180° c-plane

0°	5°	10°	15°	20°	25°	30°	35°	40°	45°	50°	55°	60°	65°	70°	75°	80°	85°	90°	95°	γ
355	348	336	320	302	282	261	239	218	189	137	81	36	13	8	4	2	1	0	1	cd
100%	98%	95%	90%	85%	80%	74%	67%	61%	53%	39%	23%	10%	4%	2%	1%	1%	0%	0%	0%	of 0°val

Intensities in 270° c-plane

0°	5°	10°	15°	20°	25°	30°	35°	40°	45°	50°	55°	60°	65°	70°	75°	80°	85°	90°	95°	γ
355	355	347	334	317	298	278	256	234	211	173	117	64	26	11	7	4	2	1	0	cd
100%	100%	98%	94%	89%	84%	78%	72%	66%	60%	49%	33%	18%	7%	3%	2%	1%	0%	0%	0%	of 0°val